

# 1. ANDERSON'S BRIDGE

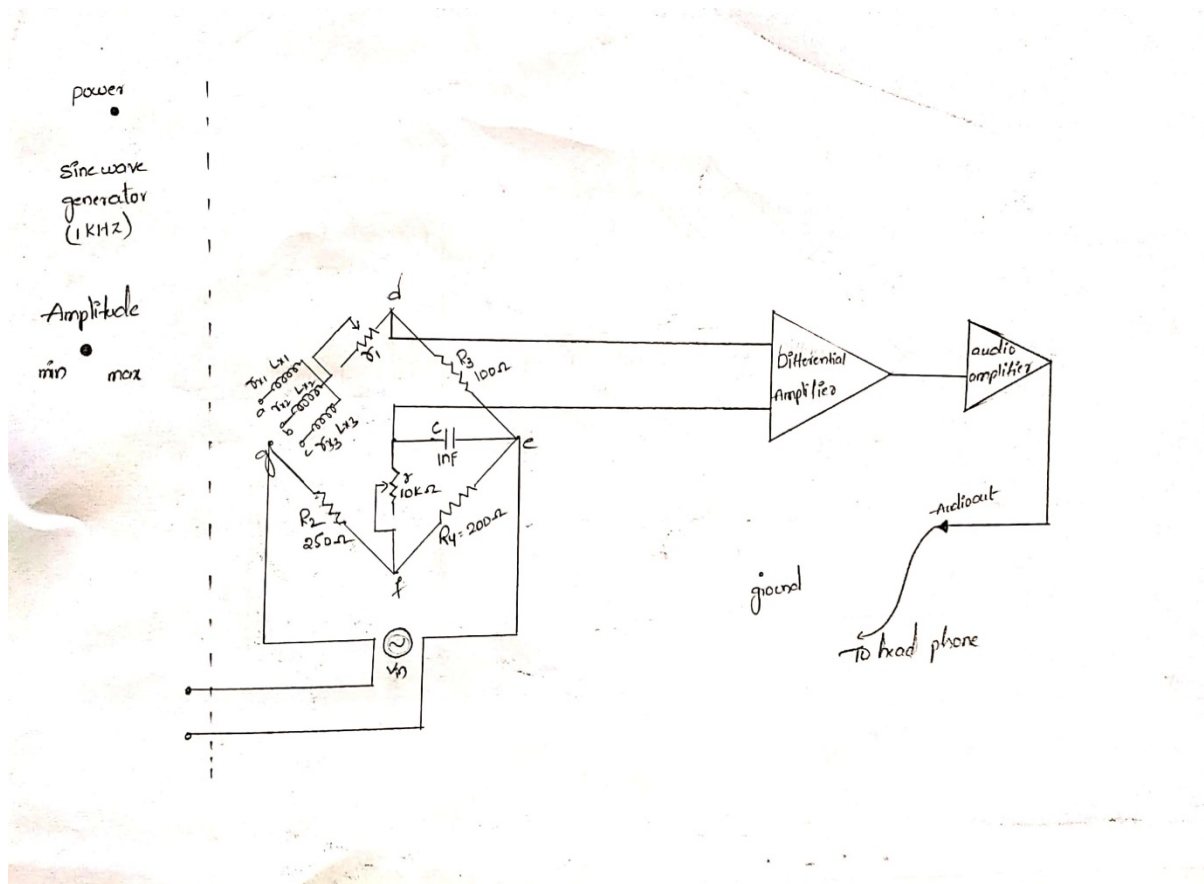
## OBJECTIVE:

To measure the value of unknown inductance with the help of Anderson's bridge.

## APPARATUS REQUIRED:

1. Anderson's bridge trainer kit.
2. 2mm patch chords.
3. Digital multimeter.

## CIRCUIT DIAGRAM:



**PROCEDURE:**

1. Make the connections as per the circuit diagram.
2. Connect the one pair of end terminals to the input supply and other end terminals are connected to the Differential amplifier.
3. Set the amplitude knob in maximum position.
4. Rotate the Potentiometer will equal to the  $r_1 = 123.8\Omega$  per unknown inductor  $L_x$ .
5. Switch on the power supply. Now connect the head phone to audio socket.
6. Rotate the potentiometer  $r$  to find a condition where null or minimum sound is generated.
7. For different combinations of  $L$  and  $R$ , vary the  $r$  where null or minimum sound is generated.
8. Switch off the power supply take the readings of variable resistance  $r$  and calculate the unknown inductance.

**TABULAR COLUMN:**

S.NO.	$r(\Omega)$ measured	$r_1(\Omega)$ measured	$R_x(\Omega)$ conducted	$L_x(\mu H)$ calculated
1	0.643	123.5	326.79	173.5
2	1.286	123.5	326.79	314.3
3	1.702	123.5	326.79	416.3

**CALCULATIONS:**

Calculated value of  $L_x = CR^3/R^4(r(R_4+R_2)+R_4.R_2)$

Calculates the value of  $R_x = R_2.R_3/R_4-r_1$

**RESULT:**

The value of unknown inductance is calculated by using Anderson's bridge trainer kit.

## 2. DE SAUTY'S BRIDGE

### Technical Specifications

#### SINE WAVE GENERATOR

Frequency	:	1kHz $\pm$ 10%
Amplitude	:	Upto 15 Vpp
Fuse	:	15mA
Mains Supply	:	230 V $\pm$ 10%,50Hz
Unknown Capacitors	:	0.1 $\mu$ F,0.22 $\mu$ F,0.47 $\mu$ F

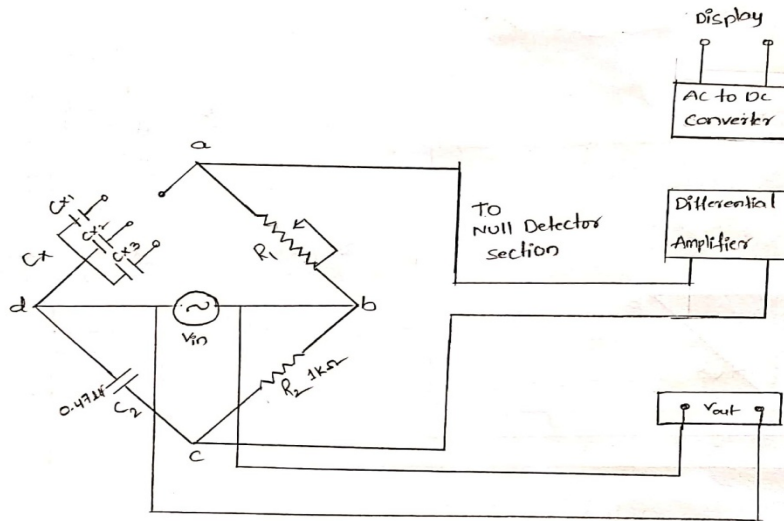
#### **OBJECTIVE:**

Determination of unknown capacitance using De Sauty's Bridge method.

#### **ITEMS REQUIRED:**

1. De Sauty's Bridge Trainer
2. 2mm Patch cords
3. Multimeter

## CIRCUIT DIAGRAM:



## PROCEDURE:

1. Make the connections as per the circuit diagram.
2. Connect the one pair of bridge end terminals to the null detector section
3. and the input terminals are connected to output terminals
4. Set the  $R_1$  knob in minimum position.
5. Set the amplitude knob in maximum position.
6. Switch on the power supply.
7. For different combinations of unknown capacitance, vary the  $R_1$  knob until the null detection section shows zero reading and at that instant note down the value of  $R_1$ .
8. Now calculate the values of  $C_{x1}$ ,  $C_{x2}$  and  $C_{x3}$  in each case.
9. Switch off the power supply to the trainer kit.

**TABULAR COLUMN:**

S.NO	Variable resistance $R_1(k\Omega)$	Standard resistance $R_2(k\Omega)$	Capacitance $C_2(\mu F)$	Unknown Capacitance $C(\mu F)=R_2 \times (C_2/R_1)$
1	5.68	1	0.47	$C_{x1}=0.083$
2	2.19	1	0.47	$C_{x2}=0.211$
3	1	1	0.47	$C_{x3}=0.47$

**PRECAUTIONS:**

1. Avoid loose connections.
2. When under balanced condition occurs switch off the power supply, and take the variable resistance using multimeter.
3. Smoothly vary the variable resistance  $R_1$

**RESULT:**

Unknown capacitance is calculated by using De Sauty's bridge.

### **3. SCHERING BRIDGE**

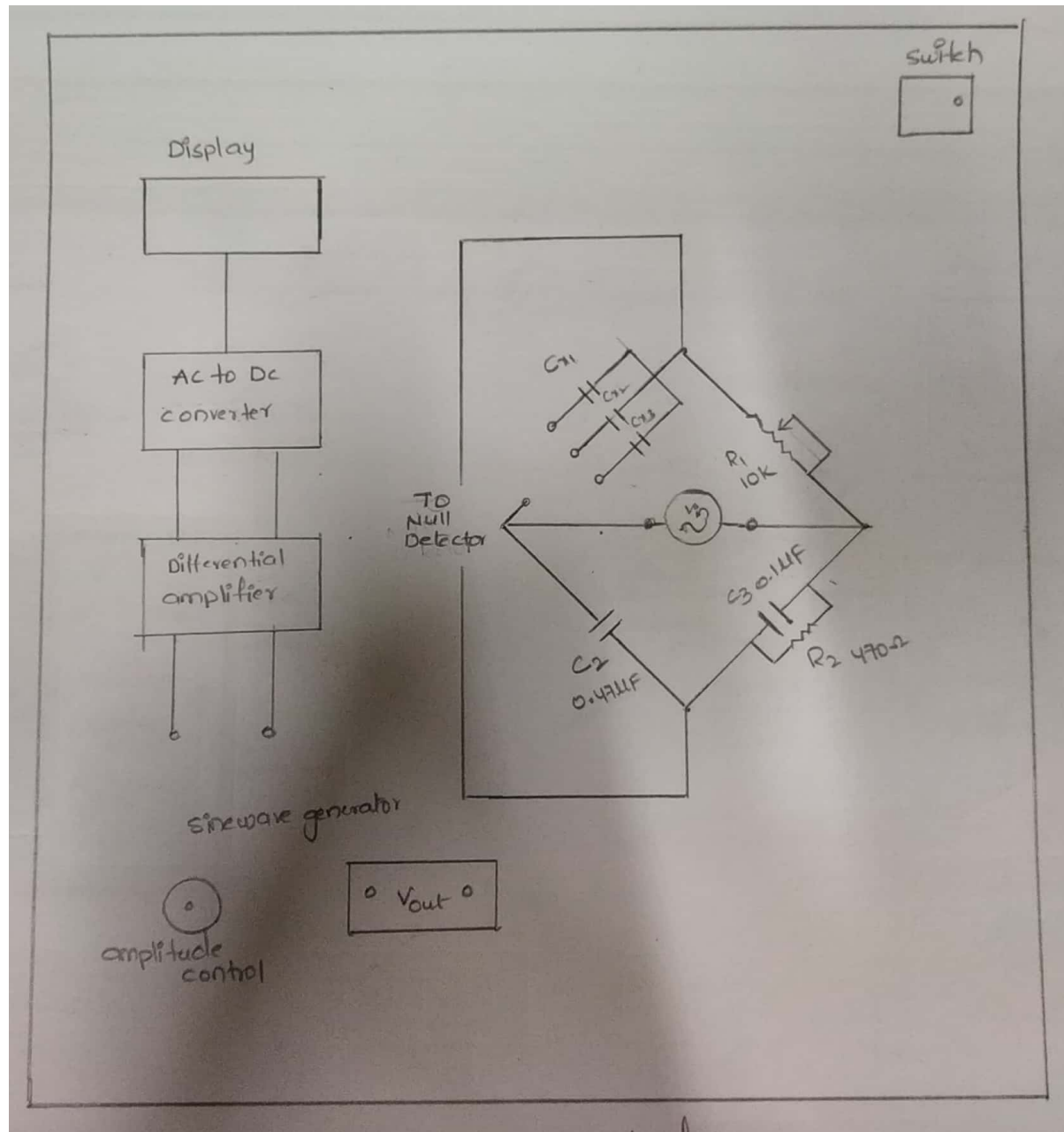
#### **OBJECTIVE:**

Determination of unknown capacitance using Schering Bridge method.

#### **ITEMS REQUIRED:**

1. Schering Bridge Trainer
2. 2mm Patch cords
3. Multimeter

## CIRCUIT DIAGRAM:



## **PROCEDURE:**

- 1) Make the connections as per the circuit diagram.
- 2) Connect the one pair of bridge end terminals to the null detector section.
- 3) And the other input terminals are connected to output terminals of the bridge.
- 4) Set the  $R_1$  knob in minimum position.
- 5) Set the amplitude knob in maximum position.

- 6) Switch on the power supply.
- 7) For different combinations of unknown capacitance ,vary the  $R_1$  knob until the null detection section shows zero reading and at that instant note down the value of  $R_1$ .
- 8) Now calculate the values of  $C_{x1}$ ,  $C_{x2}$  and  $C_{x3}$  in each case.
- 9) Switch off the power supply to the trainer kit.

**TABULAR COLUMN:**

S.NO	Variable resistance $R_1(k\Omega)$	Standard resistance $R_2(\Omega)$	Capacitance $C_2(\mu F)$	Unknown Capacitance $C(\mu F)=R_2 \times (C_2/R_1)$
1	2.57	470	0.47	$C_{x1}=0.085$
2	1.11	470	0.47	$C_{x2}=0.199$
3	0.55	470	0.47	$C_{x3}=0.409$

**PRECAUTIONS:**

- 1) Avoid loose connections.
- 2) When under balanced condition occurs switch off the power supply, and take the variable resistance using multimeter.

**RESULT:**

Unknown capacitance is calculated by using Schering bridge.



## 4. HAY'S BRIDGE

### Sine Wave Generator

Frequency : 1kHz to 10kHz  $\pm 10\%$

Amplitude : 0 to 5 V<sub>pp</sub>

DPM : 0-200mV

Unknown Inductors: 58mH  $\pm 10\%$  with 58  $\Omega$   $\pm 10\%$  of resistance

100mH  $\pm 5\%$  with 174  $\Omega$   $\pm 5\%$  of resistance

116mH  $\pm 10\%$  with 116  $\Omega$   $\pm 10\%$  of resistance

Mains Supply : 230V  $\pm 10\%$ , 50Hz

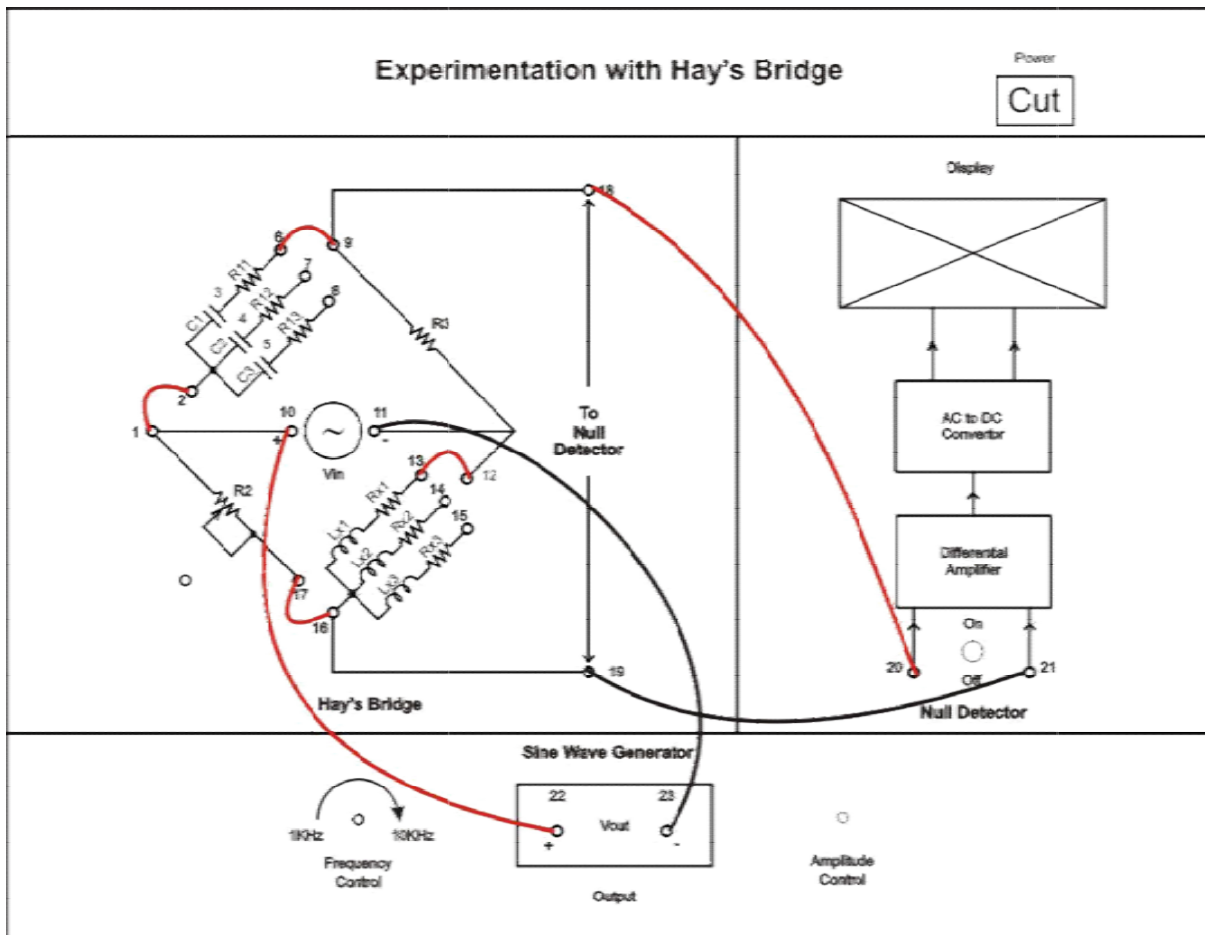
### OBJECTIVE:

Determination of unknown inductance and Q factor using Hay's bridge method

### Apparatus:

1. Sciencetech 5356 trainer
2. 2mm patch cords
3. CRO
4. Digital multimeter

## CIRCUIT DIAGRAM:



## **PROCEDURE:**

1. Make the connections as per the circuit diagram.
2. Set the frequency of the sine wave generator to 2kHz by connecting its terminals to CRO.
3. Set the amplitude of sine wave using **Amplitude Control** knob in sine wave generator section as per your convenience.
4. Connect one end pair of the bridge terminals to the sinewave generator section as input to the bridge.
5. Connect the other end pair terminals to the null detector section.
6. Connect the combination of C1 and R11 to the and Lx1 and Rx1 into the circuit.
7. For known value of R3, vary the R2 knob until the null detector shows the zero reading.
8. At this instant calculate the value of Lx1 and Rx1.
9. Repeat the above procedure for different combinations of C and R1.
10. Switch off the power supply.

**TABULAR COLUMN:**

C1 and R11	R3( $\Omega$ )	R <sub>1x</sub> ( $\Omega$ )	Cx(nF)	R2(k $\Omega$ )	Lx(mH)	Rx( $\Omega$ )	Q1
	500	28	220	0.552	60.36	58.65	12.93
	500	28	220	0.738	80.69	78.42	12.97
	500	28	220	0.910	99.5	96.69	12.93
C2 and R12	500	20	330	0.435	71.29	74.22	12.06
	500	20	330	0.775	127	132.25	12.063
	500	20	330	0.911	149.29	155.44	12.063
C3 and R13	500	13	470	0.351	82	79.04	13.03
	500	13	470	0.605	140.6	185.56	13.03
	500	13	470	0707	165.2	159.21	13.03

**FORMULAS USED:**

$$L1 = \frac{R2 \times R3 \times C4}{(1 + \omega^2 \times R4^2 \times C4^2)}$$

$$R1 = \frac{\omega^2 \times R2 \times R3 \times R4 \times C4^2}{(1 + \omega^2 \times R4^2 \times C4^2)}$$

$$Q = \frac{\omega \times L1}{R1} = \frac{1}{\omega \times R4 \times C4}$$

**RESULT:**

The values of unknown Inductance and Q-factor are determined using Hay's Bridge trainer kit.

## 5. KELVIN'S BRIDGE

### Technical specifications

Mains supply	: 230V $\pm$ 10%,50HZ
DC Power supply	: +5V
Unknown Resistors	: 0.3 $\Omega$ ,0.4 $\Omega$ ,0.8 $\Omega$
Known Resistors	: R1=100K $\Omega$ ,20K $\Omega$ ,10K $\Omega$ R3=1K $\Omega$ ,200 $\Omega$ ,100 $\Omega$
DPM	: 2V

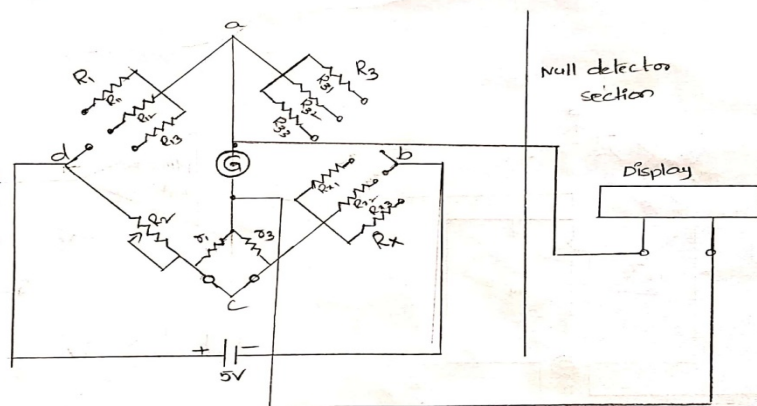
### OBJECTIVE:

Determination of low resistance using Kelvin's Bridge method.

### ITEMS REQUIRED:

1. Kelvin's Bridge trainer kit
2. Digital Multi meter
3. 2 mm patch chords

### CIRCUIT DIAGRAM:



**PROCEDURE:**

- 1) Make the connections as per the circuit diagram.
- 2) Connect the galvanometer end terminals to the null detector section.
- 3) Set the  $R_2$  knob in minimum position.
- 4) Adjust the ratio of  $r_1$  and  $r_3$  such that it is equal to the ratio of  $R_1$  and  $R_3$ .i.e 100:1
- 5) Connect  $r_1$  and  $r_3$  with a 2mm patch card.
- 6) For different combinations of  $R_1$  and  $R_3$  vary the  $R_2$  knob until the null detection section shows zero reading switch off the power supply and at that instant note down the value of  $R_2$ .
- 7) Now calculate the values of  $R_{x1}, R_{x2}$  and  $R_{x3}$  in each case.
- 8) Switch off the power supply to the trainer kit.

**TABULAR COLUMN:**

	$R_1(k\Omega)$	$R_3(k\Omega)$	$R_2(k\Omega)$	$R_x(k\Omega)=(R_2 \times R_3)/R_1$
Rx1	100	1	96	0.96
	20	0.2	95.4	0.95
	10	0.1	90	0.9
Rx2	100	1	51	0.51
	20	0.2	50	0.5
	10	0.1	49.9	0.49
Rx3	100	1	36.5	0.36
	20	0.2	36	0.36
	10	0.1	35.5	0.35

**RESULT:** unknown resistance is determined by using kelvins bridge

## 6. MAXWELL'S BRIDGE

### Technical Specifications

Mains supply	: 230V AC $\pm$ 10%,50Hz
DC power supply	: $\pm$ 12V
Sine wave generator	
Fixed frequency	: 1 kHz $\pm$ 5%
Amplitude control range	: Up to 20V <sub>pp</sub>
DPM	: 200mV
Unknown Inductors	: 56 $\mu$ H ,24 $\mu$ H,12 $\mu$ H,10mH,20mH,30mH

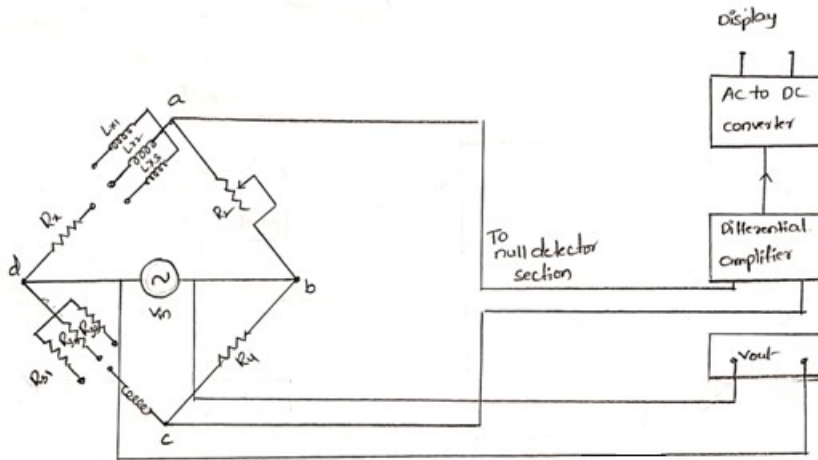
### **OBJECTIVE:**

Determination of unknown inductance using Maxwell's inductance bridge method.

### **ITEMS REQUIRED:**

- 1) Maxwell's trainer kit
- 2) 2 mm patch cords
- 3) Digital Multimeter
- 4) Oscilloscope

**CIRCUIT DIAGRAM:**



**PROCEDURE:**

- 1) Make the connections as per the circuit diagram.
- 2) Connect the one pair of bridge end terminals to the null detector section.
- 3) And other input terminals are connected to output terminals.
- 4) Set the  $R_2$  knob in minimum position.
- 5) Set the amplitude in maximum position. i.e., 1 kHz.
- 6) For different combinations of  $R$  and  $L$  vary the  $R_2$  knob until the null detection section shows zero reading .
- 7) Switch off the power supply, note the values of  $R_2$  by using multimeter.
- 8) Now calculate the values of unknown resistance( $R_x$ )and inductance( $L_x$ ), in each case.
- 9) Switch off the power supply to the trainer kit.

**TABULAR COLUMN:**

Cases	$R_2(\Omega)$	$R_4(\Omega)$	$R_3(\Omega)$	$L_1(\mu H)$	$L_x=R_2.L_1/R_4(\mu H)$	$R_x=R_2.R_3/R_4(\Omega)$
1	270	100	120.8	12.1	32.67	326.16
2	198	100	237.9	12.1	23.9	471
3	110.9	100	470	12.1	13.4	521.2

**RESULT:**

The unknown resistance and inductance values are calculated by using Maxwell’s inductance bridge.

## 7. MAXWELL'S INDUCTANCE CAPACITANCE BRIDGE

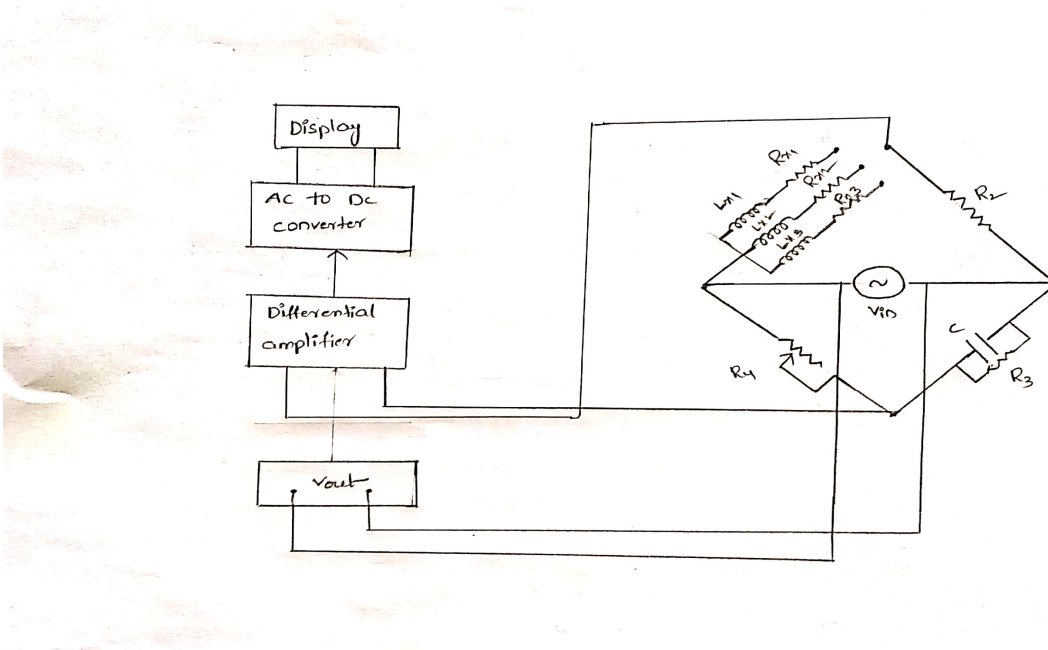
### OBJECTIVE:

Determination of unknown inductance and Q-factor using Maxwell's inductance capacitance bridge method

### ITEMS REQUIRED:

1. Maxwell's bridge trainer kit.
2. 2mm patch cords
3. Digital Multimeter
4. Oscilloscope

### CIRCUIT DIAGRAM:





## **PROCEDURE:**

- 1) Make the connections as per the circuit diagram.
- 2) Connect the one pair of bridge end terminals to the null detector section.
- 3) And other input terminals are connected to output terminals.
- 4) Set the  $R_4$  knob in minimum position.
- 5) Set the amplitude in maximum position.i.e., 1 kHz.
- 6) For different combinations of R and L vary the  $R_4$  knob until the null detection section shows zero reading and at that instant note down the value of  $R_4$ .
- 7) Switch off the power supply,note the values of  $R_4$  by using multimeter.
- 8) Now calculate the values of unknown resistance( $R_x$ )and inductance( $L_x$ ) and Q factor, in each case.
- 9) Switch off the power supply to the trainer kit.

## **TABULAR COLUMN:**

S.N O.	$R_2(\Omega)$	Variable resistance $R_4(\Omega)$	$R_3(k\Omega)$	$C_1(nF)$	Unknown inductance $L_x=$ $R_4.R_2.C_1(mH)$	Unknown resistance $R_x=$ $R_2.R_4/R_3(\Omega)$	$Q=\omega L_x/R_x=$ $\omega C_1.R_3$
1	221	118	1.122	330	8	23	2.18
2	221	236	1.122	330	17	46	2.32
3	221	319	1.122	330	23	62	2.32

## **RESULT:**

The unknown values of resistance, inductance and also Q- factor is calculated by using Maxwell's inductance capacitance bridge.

## 9. SLIDE WIRE POTENTIOMETER

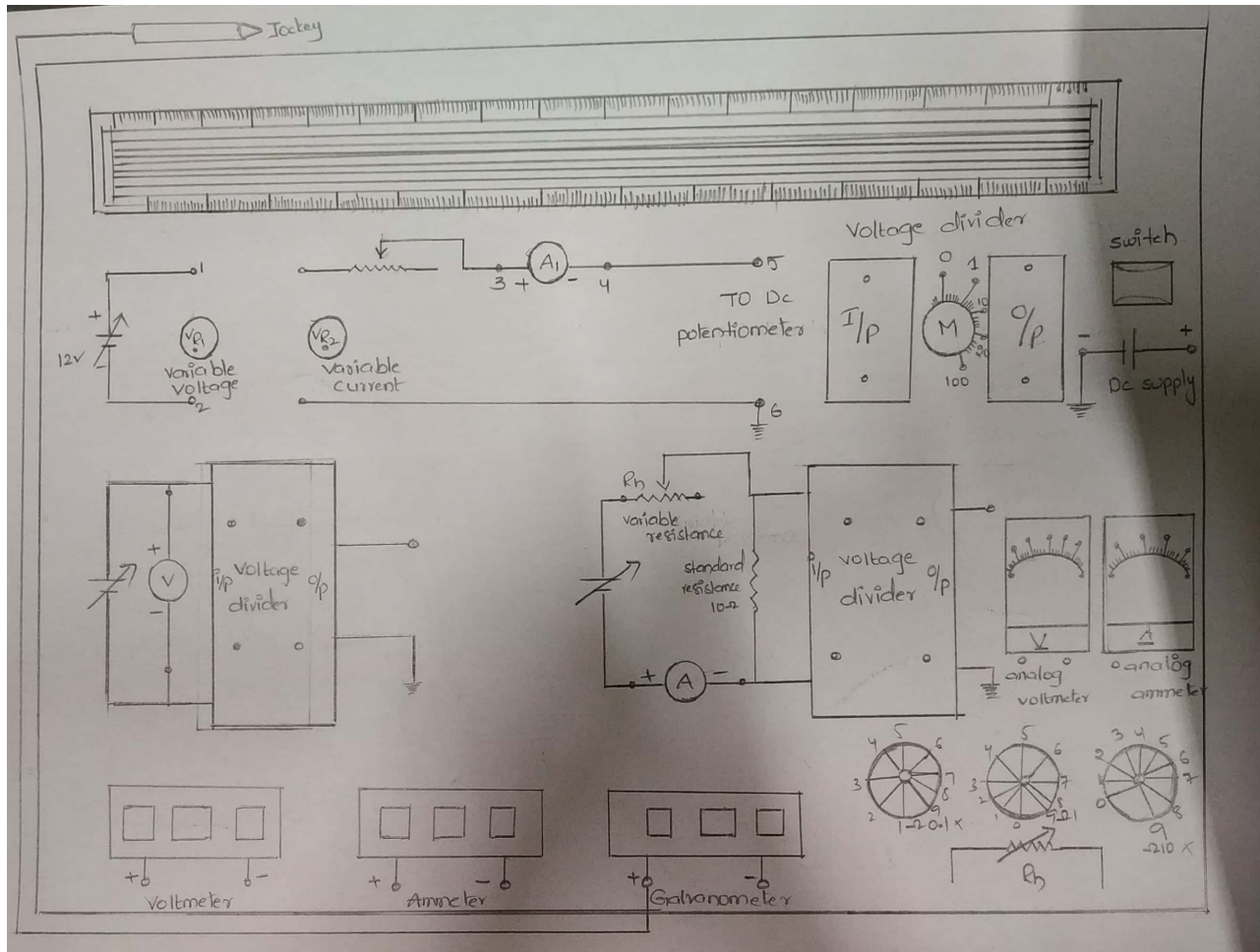
### OBJECTIVE:

Calibration of voltmeter and ammeter by using slidewire potentiometer

### ITEMS REQUIRED

- 1) Potentiometer
- 2) Sliding jockey
- 3) Mains cord
- 4) Patch cords

### CIRCUIT DIAGRAM:



## PROCEDURE:

### CALIBRATION OF VOLTMETER:

1. Initially test the supply voltage to the potentiometer trainer kit by connecting one of the terminals of the digital voltmeter to the DC supply and the other terminal to the ground of the DC potentiometer.
2. By connecting the digital ammeter terminals to the DC potentiometer and connect dc potentiometer terminals to the X and Z terminals.
3. Connect the galvanometer positive terminal to the jockey and negative terminal to the dc supply adjust the ammeter reading to 30mA by varying the VR2 knob.
4. Touch the jockey to X and Z terminals observe the reading in galvanometer
5. Now slide the jockey on potentiometer wire and find null point Now measure the distance L moved from Z terminal to null point  $L=[(n-1)*100+r]$
6. Divide output of dc supply  $V_{dc}$  to the distance L. this will give a constant C which is voltage drop per cm  $C=V_{dc}/L$
7. Now disconnect DC supply from galvanometer negative terminal.
8. Connect the variable voltage VR1 to the input supply in the voltmeter section.
9. Connect the input and output terminals of the voltage divider in voltmeter section to the voltage divider circuit
10. Connect an analog voltmeter to the voltage in the voltmeter section.
11. Connect negative terminal of galvanometer to the ending terminal of the voltage divider in the voltmeter section.
12. Vary the VR1 knob to adjust the voltmeter reading to 1V.
13. Now slide the jockey on the DC potentiometer until the galvanometer reads zero.
14. Note down the length of the wire corresponding to the zero reading.
15. Repeat the above procedure for different values of standard voltages.

### TABULAR COLUMN: CALIBRATION OF VOLTMETER:

S.No	DC Voltmeter Reading(V)	Null point position D(cm)	Voltage Ratio(M)	Voltage across potentiometer $V_p=C \times D \times M$	% Error= $\frac{V-V_p}{V_p} \times 100$
1	1	894	1	1.1	-15
2	2	274	10	3.6	-44
3	3	363	10	4.7	-36
4	4	456	10	6.01	-33
5	5	545	10	7.19	-30
6	6	624	10	8.23	-27
7	7	712	10	9.3	-24
8	8	805	10	10.6	-24
9	9	484	10	12.7	-29

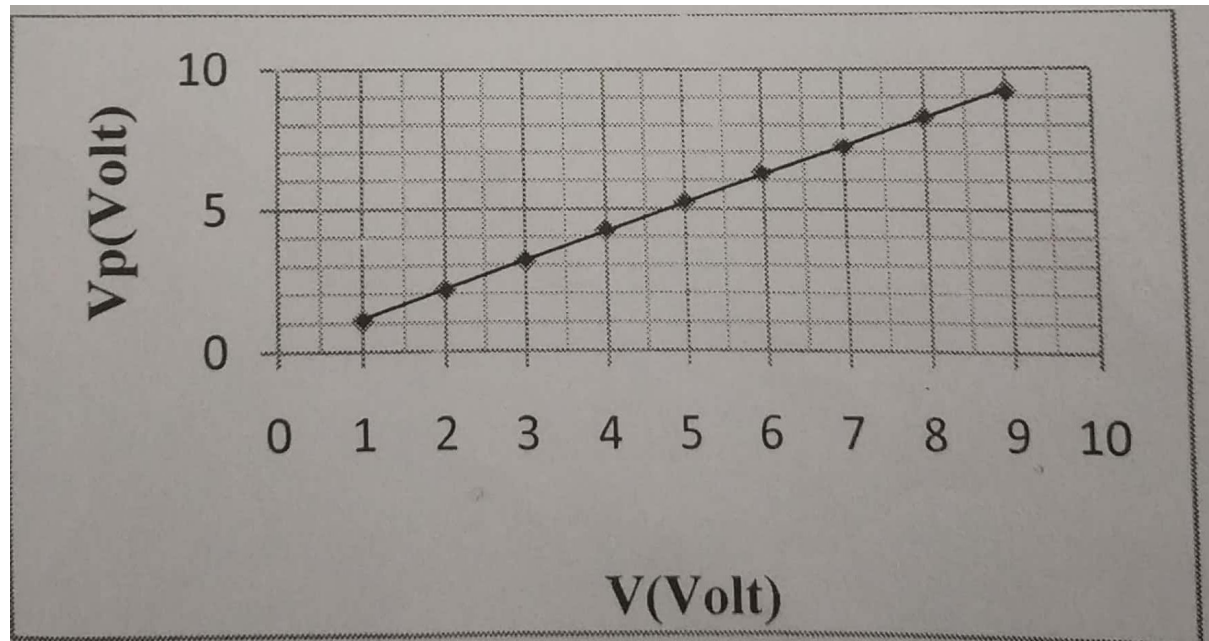
### **CALIBRATION OF AMMETER:**

1. Initially test the supply voltage to the potentiometer trainer kit by connecting one of the terminals of the digital voltmeter to the DC supply and the other terminal to the ground of the DC potentiometer.
2. By connecting the digital ammeter terminals to the DC potentiometer and connect dc potentiometer terminals to the X and Z terminals.
3. Connect the galvanometer positive terminal to the jockey and negative terminal to the dc supply adjust the ammeter reading to 35mA by varying the VR2 knob.
4. Touch the jockey to X and Z terminals observe the reading in galvanometer
5. Now slide the jockey on potentiometer wire and find null point Now measure the distance L moved from Z terminal to null point  $L=[(n-1)*100+r]$
6. Divide output of dc supply  $V_{dc}$  to the distance L. this will give a constant C which is voltage drop per cm  $C=V_{dc}/L$
7. Now disconnect DC supply from galvanometer negative terminal
8. Connect the variable voltage VR1 to the input supply in the ammeter section.
9. Connect the input and output terminals of the voltage divider in ammeter section to the voltage divider circuit
10. Connect the variable resistance in series with the input terminals of the ammeter section and also connect an analog ammeter to the ammeter in ammeter section.
11. Connect the negative terminal of galvanometer to the end terminal of the voltage divider in ammeter section
12. Vary the VR2 knob to adjust the ammeter reading to 0.1A. Now slide the jockey on the DC potentiometer until the galvanometer reads zero.
13. Note down the length of the wire corresponding to the zero reading.
14. Repeat the above procedure for different values of standard currents.
15. Switch off the power supply.

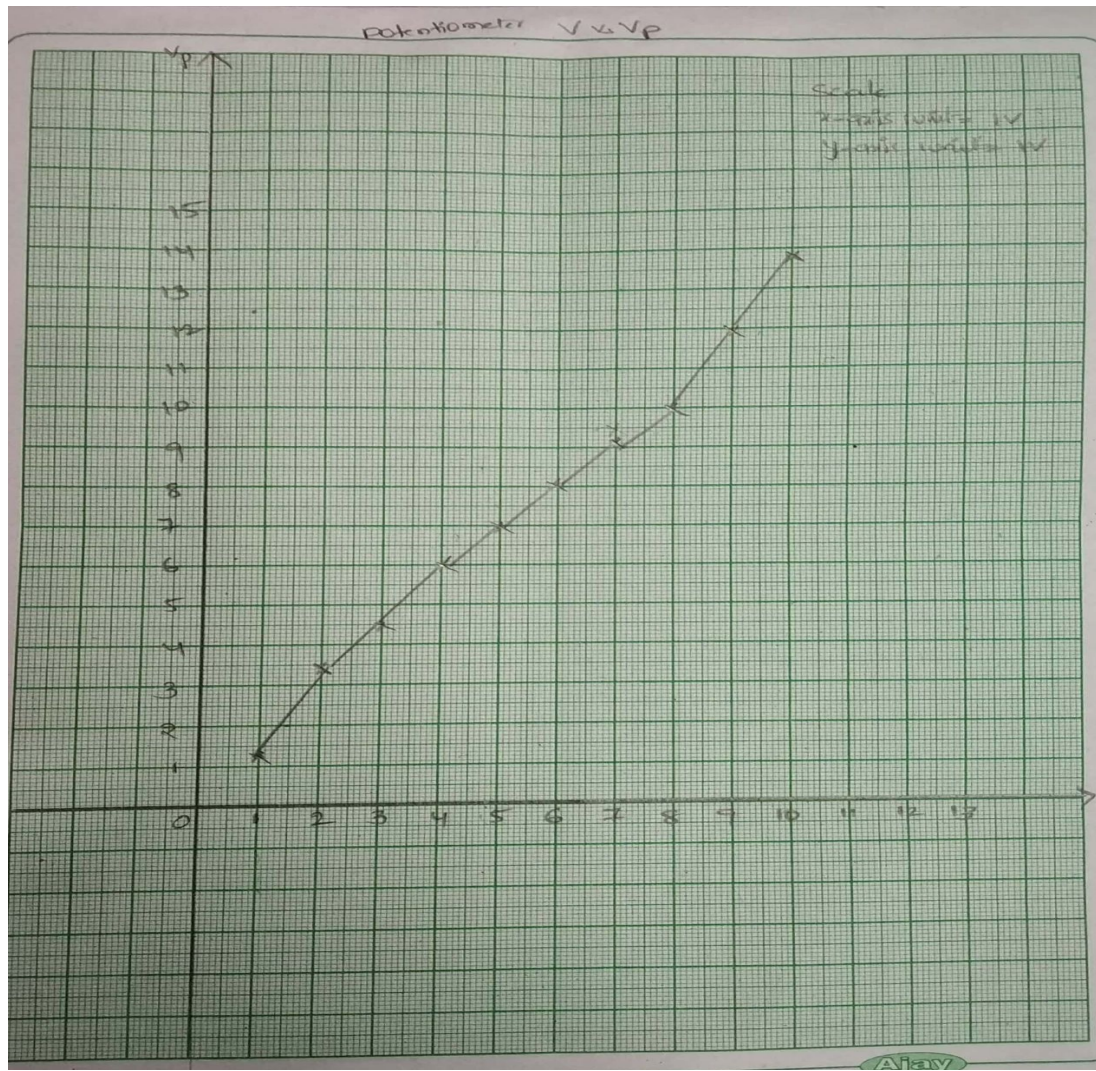
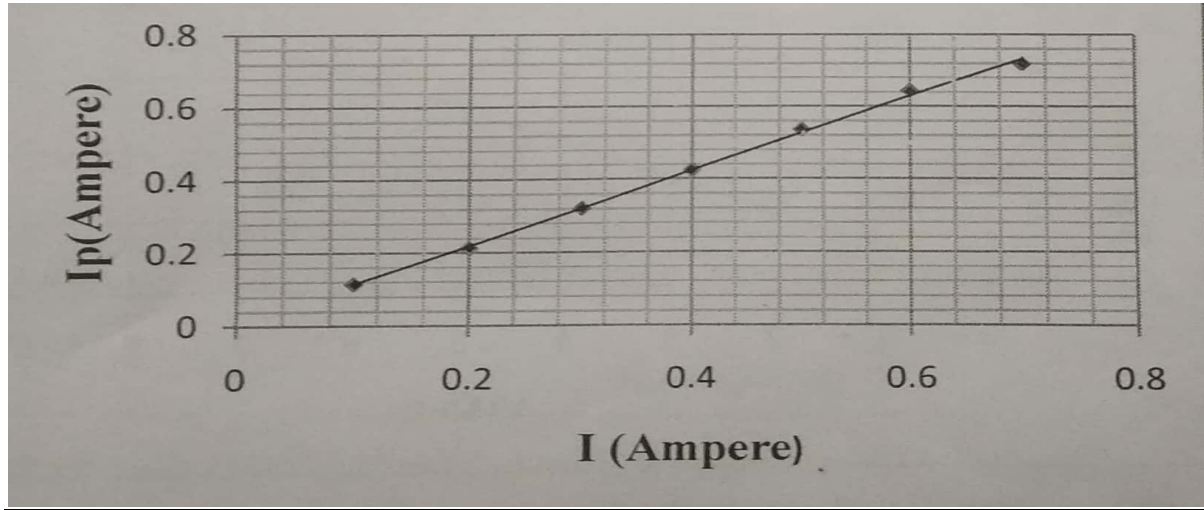
**CALIBRATION OF AMMETER:**

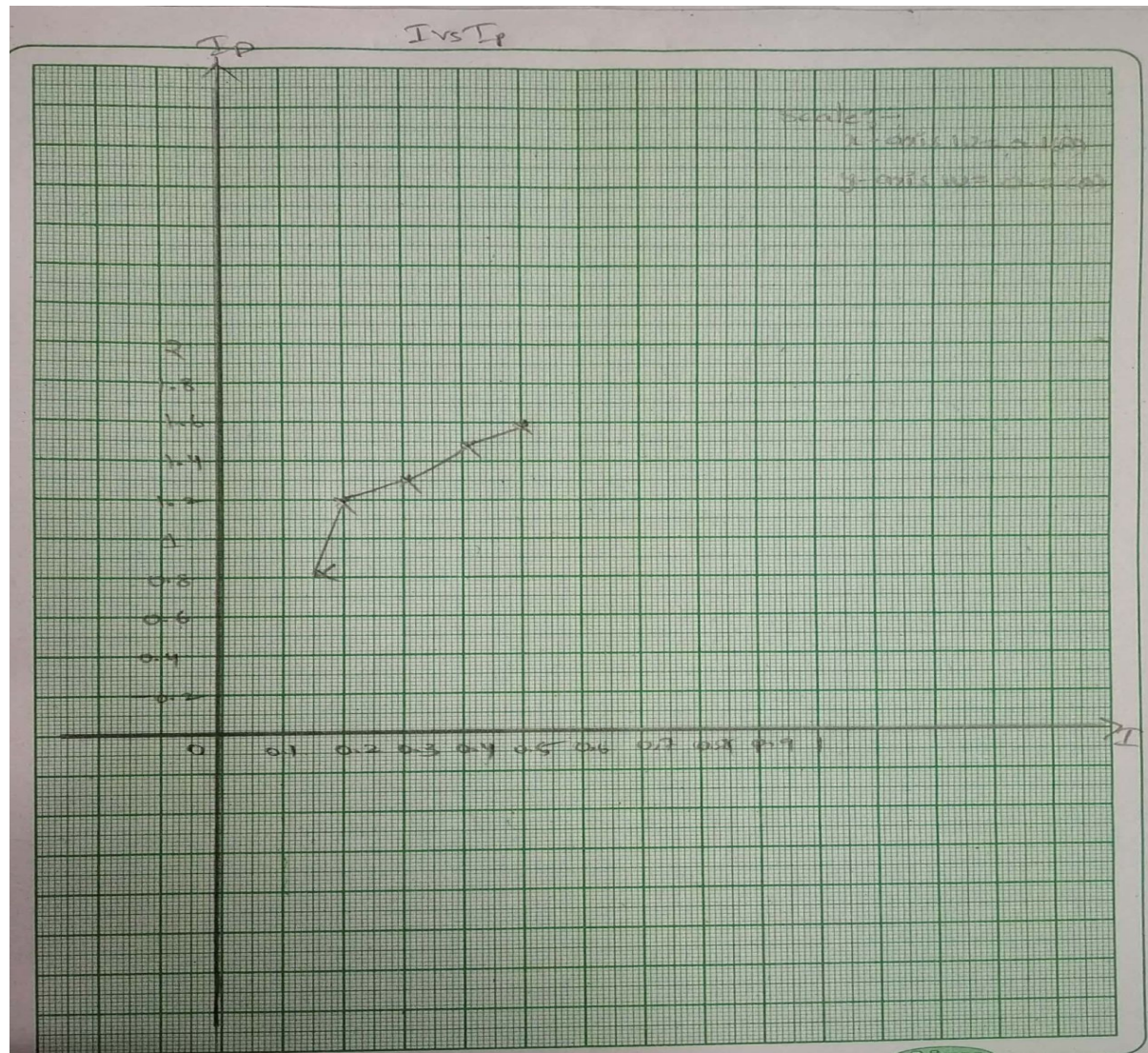
S.No	DC Ammeter Reading(A)	Null point position D(cm)	Voltage Ratio(M)	Voltage across potentiometer $V_p=C \times D \times M$	Current in standard resistance $I_p = \frac{V_p}{R}$	% Error = $\frac{I - I_p}{I_p} \times 100$
1	0.1	739	1	1.11	0.11	-9
2	0.2	282	10	4.23	0.4	-50
3	0.3	373	10	5.59	0.5	-40
4	0.4	477	10	7.15	0.71	-43
5	0.5	578	10	8.67	0.86	-37

**MODEL GRAPH 1:** The graph drawn between V and  $V_p$



**MODEL GRAPH 2:** The graph drawn between I and  $I_p$





**RESULT:** given voltmeter and ammeter is calibrated and also error will be calculated by using slide wire potentiometer

## 9. DC CROMPTON'S POTENTIOMETER

### OBJECTIVE:

To calibrate PMMC Voltmeter and Ammeter by DC Crompton's potentiometer

### APPARATUS:

S. No.	Equipment	Range	Quantity
1	DC Crompton's potentiometer Kit	1.5V/250 mV	1
2	Standard Cell	1.0180V	1
3	2 Channel RPS	30V/2A	1
4	Voltmeter	0-300V	1
5	Ammeter	0-5A	1
6	Standard Resistance Box/DRB	0.1 $\Omega$	1
7	Voltage Ratio Box	0-300V	
8	Galvanometer		1
9	Patch Chords		required



CIRCUIT DIAGRAM:

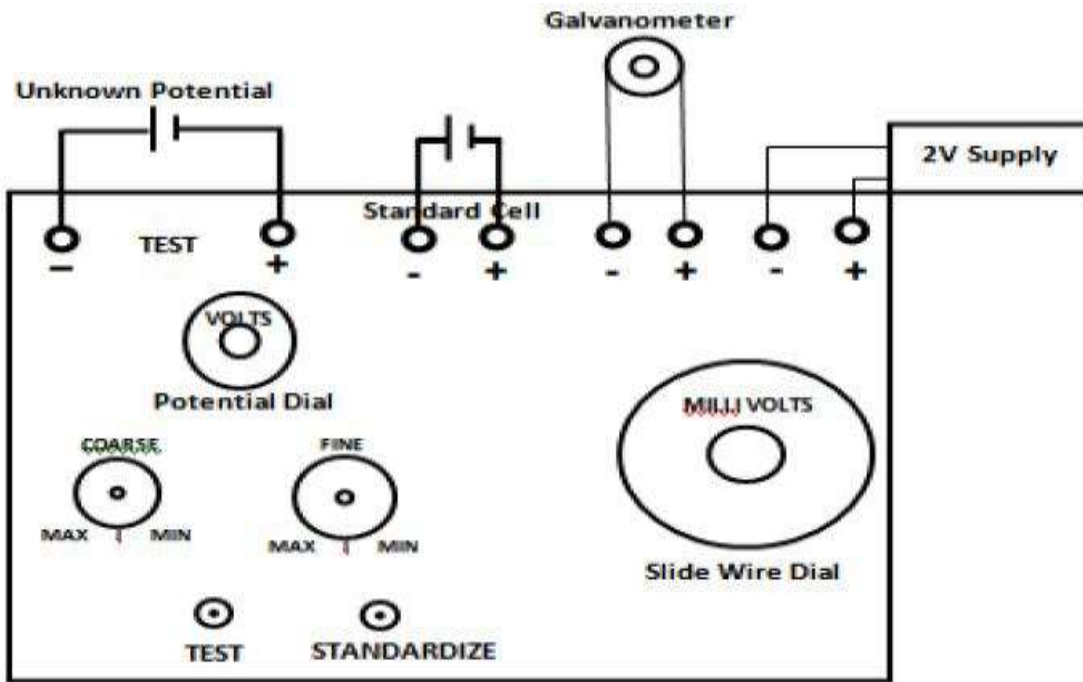


Fig – 3.1 Standardization

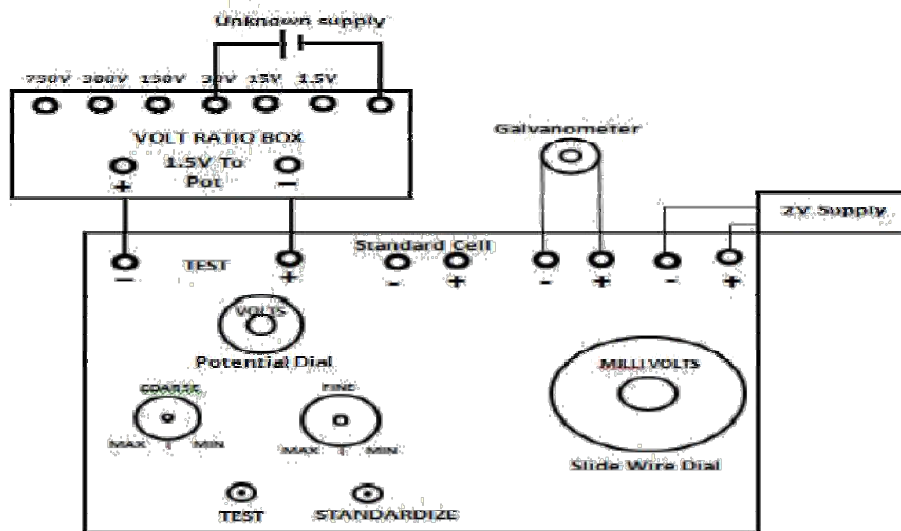


Fig – 3.2 Calibration of Voltmeter

## **PROCEDURE:**

### **Calibration Of Ammeter:**

1. Connections are given as per the block diagram.
2. Switch on the 2V D.C . power supply to the potentiometer kit.
3. Adjust the potentiometer voltage dial to 1.0186V and switch on the supply.
4. Observe the deflection in the galvanometer by pressing the standardization knob on the meter kit.
5. If deflection is not zero, then adjust the fine and coarse knobs until there is no deflection in the galvanometer.
6. Now the potentiometer is standardized.

### **Calibration of Voltmeter:**

1. Connections are given as per the block diagram.
2. Apply test voltage. Reset the potentiometer dial reading closer to the applied test voltage.
3. Now by pressing the test button observe the deflection in the galvanometer.
4. Vary the dial reading until there is no deflection in the galvanometer.
5. Now note down the readings of Voltmeter, Potentiometer dial and calculate the error.
6. Repeat this procedure for different test voltages and find the error in the voltmeter.

### **Calibration of ammeter:**

1. Connections are given as per the block diagram
2. Apply test voltage up to 30V. Reset the potentiometer dial reading closer to the applied test voltage.
3. Now by pressing the test button observe the deflection in the galvanometer.
4. Vary the dial reading until there is no deflection in the galvanometer.

5. Now note down the readings of Ammeter, Potentiometer dial, Resistance and calculate the error.
6. Repeat this procedure for different values of Resistance and find the error in the Ammeter.

**Tabular column:**

**Voltmeter calibration:**

S. No	Voltage Reading(V <sub>m</sub> )	Potentiometer Reading(V <sub>P</sub> )	% Error
1	30(1.5)	1.47	1.6
2	15(1.5)	1.47	1.5
3	1.5(1.5)	1.571	-4.5

**Ammeter calibration:**

S. No	Resistance (R)ohm	Current in the circuit (I <sub>c</sub> )mA	Potentiometer Reading (V <sub>P</sub> )V	Current in the circuit (I <sub>c</sub> )mA	% Error
1					
2					
3					

## **MODEL CALCULATIONS:**

### **Voltmeter Calibration**

$$\% \text{ Error in Meter} = [(V_m - V_p) * 100] / V_m$$

### **Ammeter Calibration**

$$\text{Current in the circuit } I_c = [V_p / R]$$

$$\% \text{ Error in Meter} = [(I_m - I_c) * 100] / I_m$$

## 10.CALIBRATION OF POWER FACTOR METER

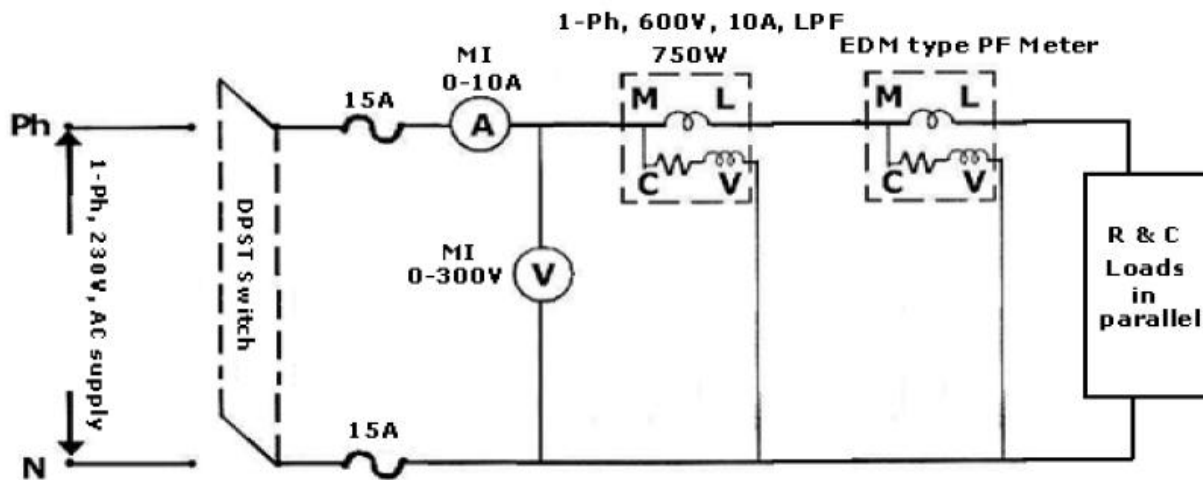
### Objective:

To calibrate dynamometer type power factor meter.

### APPARATUS

S. No	Equipment	Range	Type	Quantity
1	Power factor meter	600V/5A		1
2	Voltmeter	(0-300V)	Digital	1
3	Ammeter	(0-5A)	Digital	1
4	Loads		R,L,C	4A each
5	Wattmeter	250V/5A	UPF	1
6	1 $\phi$ variac	(0-270V)/10A		1
7	Connecting Wires			As Required

### CIRCUIT DIAGRAM:



Calibration of Dynamo Meter Type Power Factor Meter

### PROCEDURE:

1. Make the connections as per the circuit diagram.
2. Keep the Autotransformer at zero position.
3. Switch on the 230 VAC, 50 Hz, power supply.

Increase the input voltage gradually by rotating the Autotransformer in clockwise direction.

4. Now, by switching on different loads note down the corresponding values of voltmeter, ammeter, wattmeter and power factor meter for different values of individual loads and also their combinations.
5. Switch off all the loads and bring back the auto transformer to its initial position.
6. Switch off the power supply.

**TABULAR COLUMN:**

S.No	Applied Load(A)	Voltmeter Reading (V)	Ammeter Reading(A)	Wattmeter(W)	PF meter Reading(X)	PF calculated(Y) Cos $\phi = W/VI$	% Error $\frac{X-Y}{Y} \times 100$
1	R-Load-1	228.1	2.10	515	1	1.0725	7.25
2	R-Load-2	226.3	4.12	980	1	1.049	4.91
3	L-Load-1	229	2.27	20	-	0.0382lag	-
4	L-Load-2	229	4.65	80	-	0.0748lag	-
5	C-Load-1	230	1.55	00	-	0	-
6	C-Load-2	230	3.10	00	-	0	-
7	RL-Load-1	229	1.28	220	0.66lag	0.7459lag	13.015
8	RL-Load-2	228	2.61	440	0.69lag	0.736lag	6.66
9	RC-Load-1	230	1.25	190	0.73lead	0.65lead	-9.72
10	RC-Load-2	228	2.47	370	0.62lead	0.654lead	5.48
11	RLC-Load-1	229	1.88	450	0.98lead	1.039lead	6.02
12	RLC-Load-2	227	3.74	390	0.96lead	1.0289lead	7.17

**RESULT:** % Error of the given power factor meter is calibrated at different loads.

## 11.CALIBRATION OF LPF-WATTMETER BY PHANTOM LOADING

### Objective:

To calibrate a given LPF Wattmeter by phantom testing method.

### Apparatus Required:

S.No	Equipment	Range	Type	Quantity
1	LPF Wattmeter	(150/300/600V)/5A	Dynamometer	1
2	Voltmeter	(0-300V)	Digital	1
3	Ammeter	(0-5A)	Digital	1
4	Inductive load	(0-150mH)/5A		1
5	1 $\phi$ variac	(0-270V)/10A		1
6	Connecting Wires			As Required

### Theory:

Measurement of power in circuits having low power factor by ordinary electro dynamometer watt meters is difficult and inaccurate because

- 1) The deflecting torque on the moving systems is small even when the current and pressure coils and fully excited.
- 2) Errors introduced because of inductance of pressure coil tend to be large at low power factors, special features are incorporated in an electro dynamometer wattmeter to make it a low power factor type of wattmeter. These features are discussed in detail below.

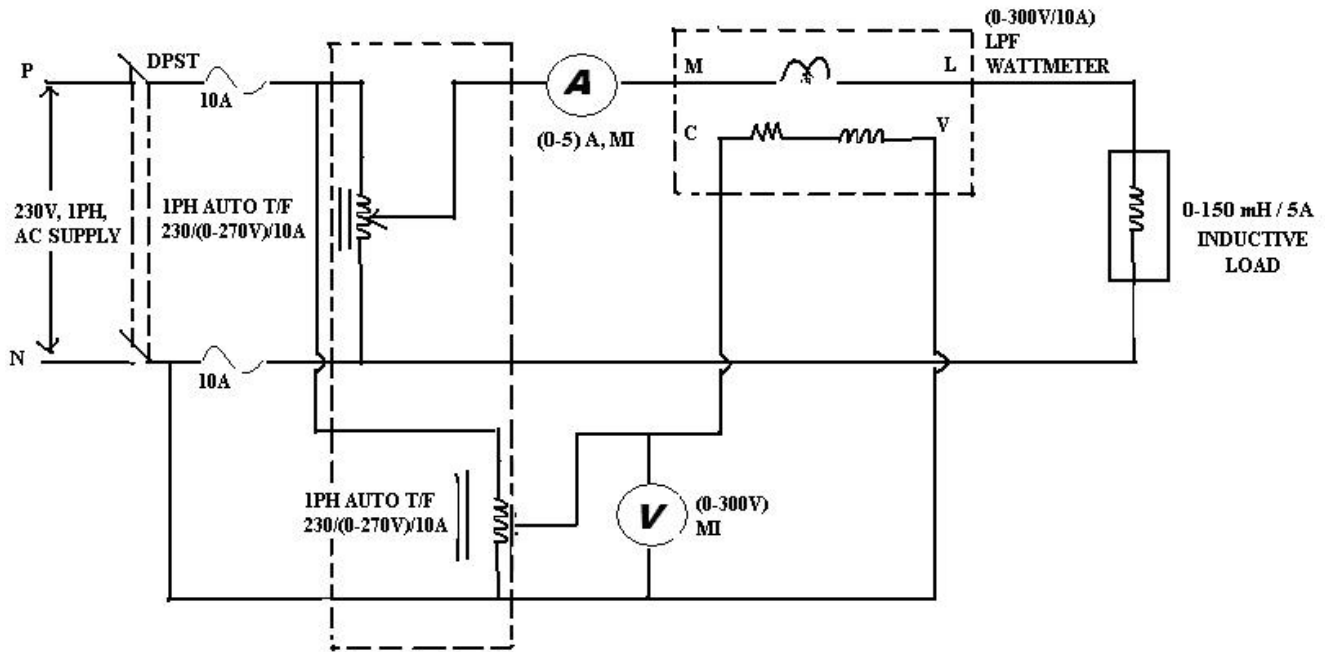
Compensation for pressure coil current.

Compensation for Inductance of pressure coil.

(c) Small control torque.

(d) Pressure coil current

**Circuit Diagram:**



**Procedure:**

- 1) Connections are made as per circuit diagram.
- 2) Kept the Auto Transformers ( 1 & 2 ) in minimum position.
- 3) Adjust the voltage of the autotransformer which is connected to the pressure coil of the wattmeter to 230V.
- 4) Now by varying the autotransformer which is connected to the load in steps of 0.5A, note down the values of voltmeter, ammeter and wattmeter.
- 5) The experiment is repeated for different values of current at constant voltage.
- 6) After noting the values slowly decrease the auto transformers till Ammeter and Voltmeter comes to zero position and switch off the supply.

**TABULAR COLUMN:**

S. No	Applied Load(A)	Voltmeter Reading(V)	Wattmeter(X)	True Power Y=VIcosφ	% Error=(X-Y)/Y×100
1	0.5	220	60	89.88	-33
2	1	219.3	130	176	-26
3	1.5	218.2	210	263.1	-20
4	2	216.8	296	349.12	-15
5	2.5	216.5	376	433.6	-13

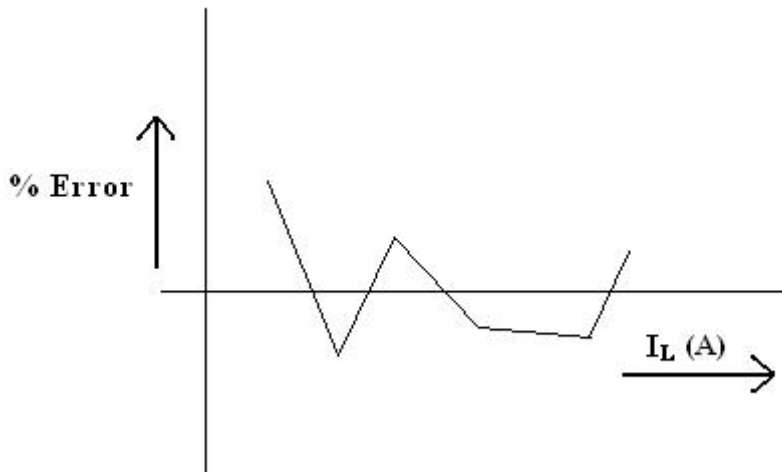


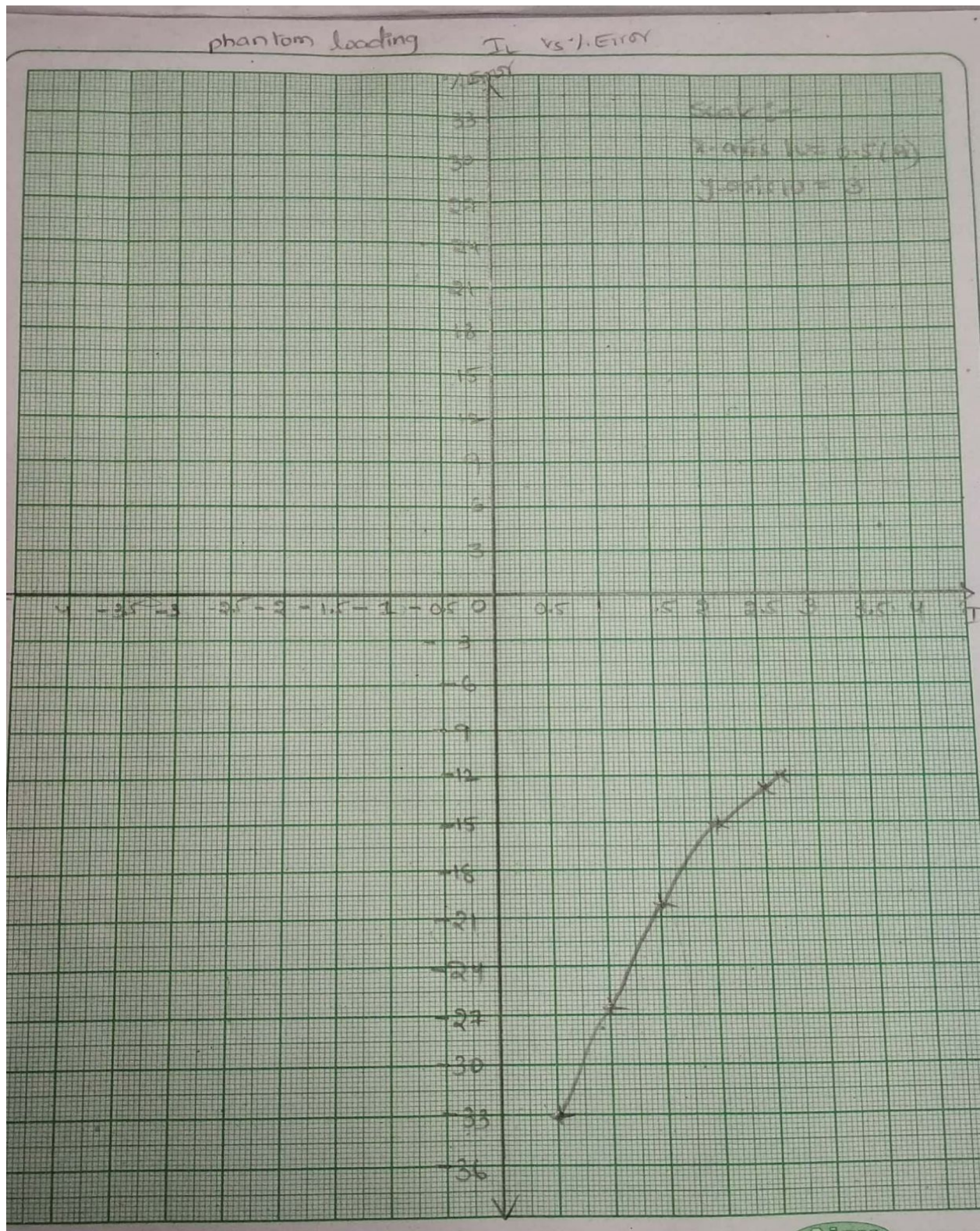
**Precautions:**

- 1) There should not be any loose connections.
- 2) Meter readings should not be exceeded beyond their ratings.
- 3) Readings of the meters must be taken without parallax error.
- 4) Ensure that setting of the Auto Transformer is at zero output voltage during starting.

**Model Graph:**

A graph is drawn between % Error and Load Current





**Result:**

Calibration of given LPF Wattmeter is done by Phantom testing and the error is calculated.

## 12. CALIBRATION OF 1-PHASE ENERGY METER

### Objective:

To calibrate and testing of single phase induction type energy meter.

### APPARATUS

S. No	Equipment	Range	Type	Quantity
1	Energy meter	3200 rev/kwhr	Induction	1
2	Voltmeter	(0-300V)	Digital	1
3	Ammeter	(0-10A)	Digital	1
4	Resistive load			1
5	Stop Watch			1
6	1 $\phi$ variac	(0-270V)/10A		1
7	Connecting Wires			As Required

### CIRCUIT DIAGRAM:

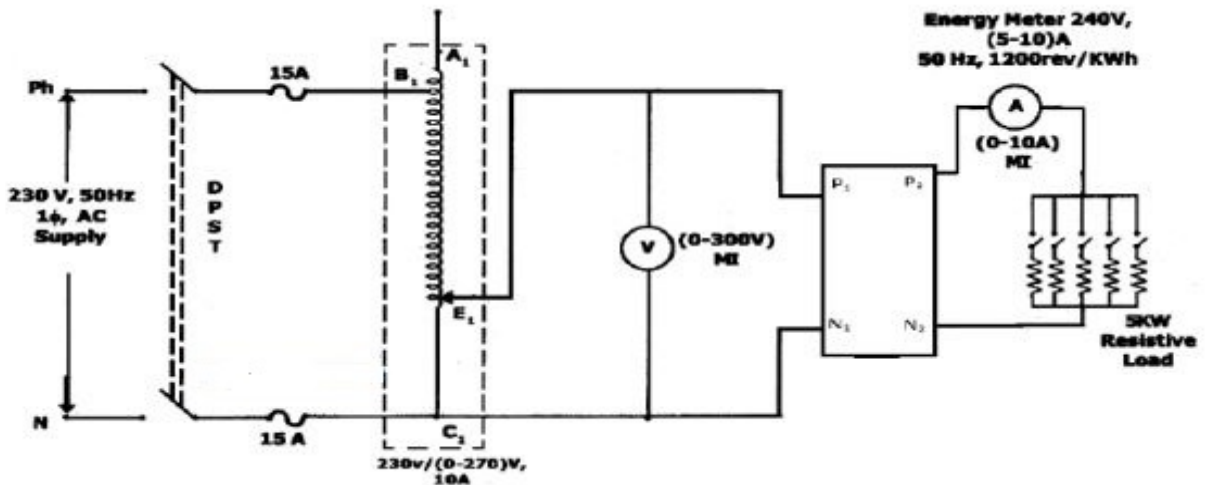


Fig – 1.1 Calibration and Testing of Single Phase Energy Meter

### PROCEDURE:

- 1) Make the connections as per the circuit diagram.
- 2) Keep the Autotransformer at zero position.
- 3) Switch on the 230 VAC, 50 Hz, power supply.
- 4) Increase the input voltage gradually by rotating the Autotransformer in clockwise direction.

- 5) Adjust the resistive load so that sufficient current flows in the circuit. Please note that the current should be less than 5A.
- 6) Note down the Voltmeter and ammeter readings for different loads as per the tabular column.
- 7) Note down the time (by using stop watch) for rotating the disc of the Energy Meter for 10 times at each load.
- 8) Bring back the auto transformer to its initial position and switch off the power supply.

**TABULAR COLUMN:**

S.No	Applied Load(A)	Voltmeter Reading (V)	Ammeter Reading(A)	R=Number of revolutions of disc	Time(sec)	$E_s(\text{kwhr})$	$E_T(\text{kwhr})$	% Error
1	1	229.6	1.04	10	41	$3.125 \times 10^{-3}$	$2.734 \times 10^{-3}$	14.9
2	2	227.6	2.22	10	19	$3.125 \times 10^{-3}$	$2.614 \times 10^{-3}$	17.2
3	3	226.7	3.24	10	13	$3.125 \times 10^{-3}$	$2.85 \times 10^{-3}$	17.42
4	4	224.9	4.24	10	11	$3.125 \times 10^{-3}$	$2.95 \times 10^{-3}$	7.02
5	5	224.3	5.24	10	9	$3.125 \times 10^{-3}$	$2.911 \times 10^{-3}$	5.89

**MODEL CALCULATIONS:**

Energy meter constant K is defined as

$$K = \frac{\text{No. of revolutions kwh}}{\text{KWH}}$$

Energy recorded by meter under test =  $R_x / K_x - \text{kWh}$ .

Energy computed from the readings of the indication instrument =  $\text{kW} \times t$

Where

Rx = number of revolutions made by disc of meter under test.

Kx = number of revolutions per k Wh for meter under test.

KW = Power in kilowatt as computed from readings watt meter indicating instruments

t = time in hours.

$$\text{Percentage Error} = \frac{(Rx / Kx - kW \times t)}{kW \times t} \times 100$$

**For 1A load:**

$$E_T = \frac{228 \times 1.04 \times 10^{-3} \times 40}{3600 \times 1000}$$
$$= 2.634 \times 10^{-3} kWh$$

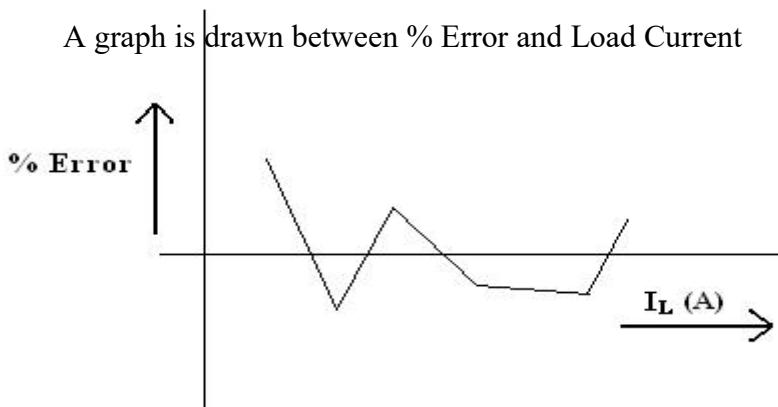
$$\%Error = \frac{3.125 \times 10^{-3} - 2.634 \times 10^{-3}}{2.634 \times 10^{-3}} \times 100$$
$$= 18.64\%$$

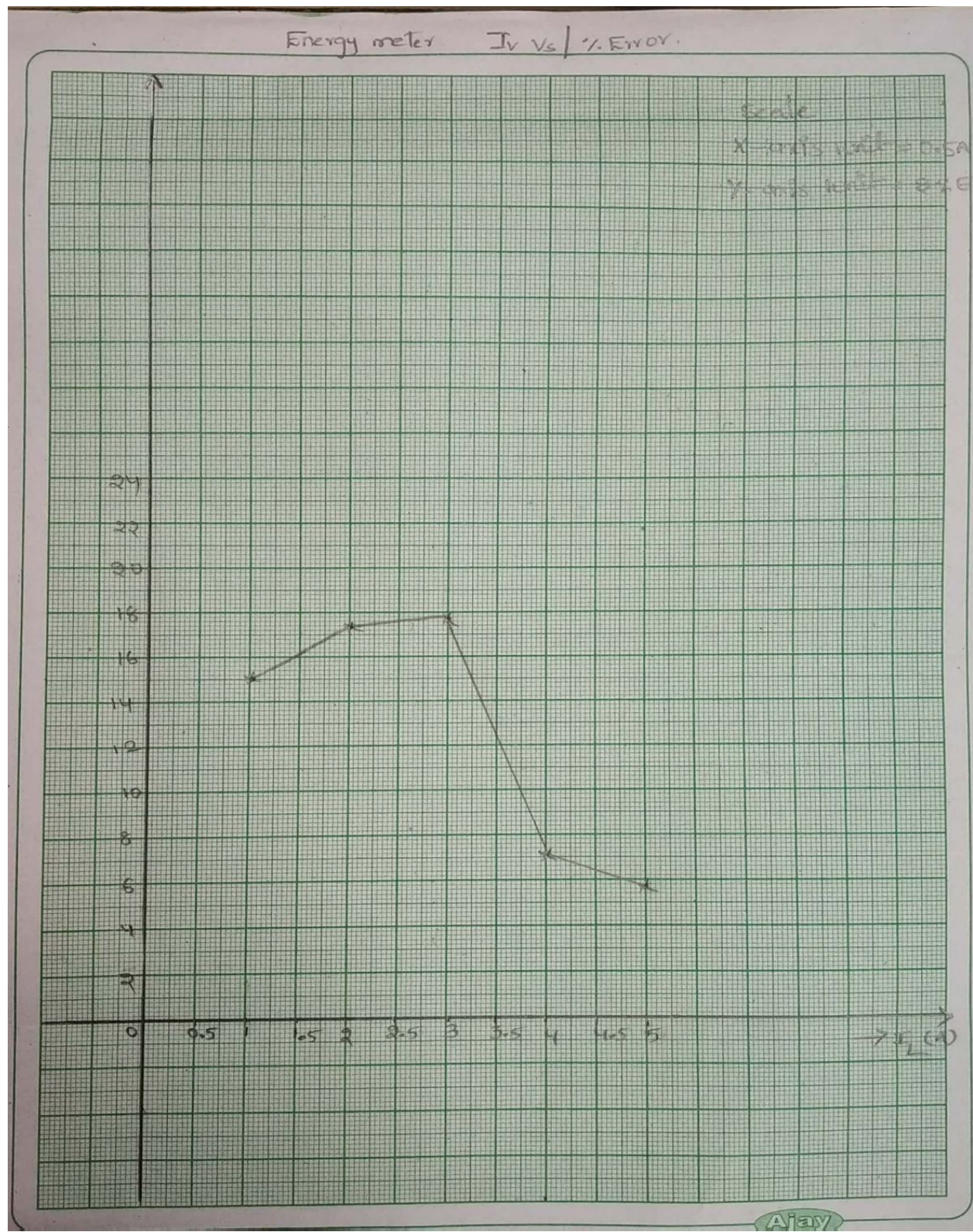
**Precautions:**

- 1) There should not be any loose connections.
- 2) Meter readings should not be exceeded beyond their ratings.
- 3) Readings of the meters must be taken without parallax error.
- 4) Ensure that setting of the Auto Transformer is at zero output voltage during starting.

**Model Graph:**

A graph is drawn between % Error and Load Current





**RESULT:**

Calibration of 1 $\phi$  energy meter has been done and error is calculated.

### 13. DIELECTRIC STRENGTH OF TRANSFORMER OIL

**OBJECTIVE:**

To test oil transformer determines the dielectric strength of oil.

**APPARATUS:**

- Oil test kit.

**CIRCUIT DIAGRAM:**

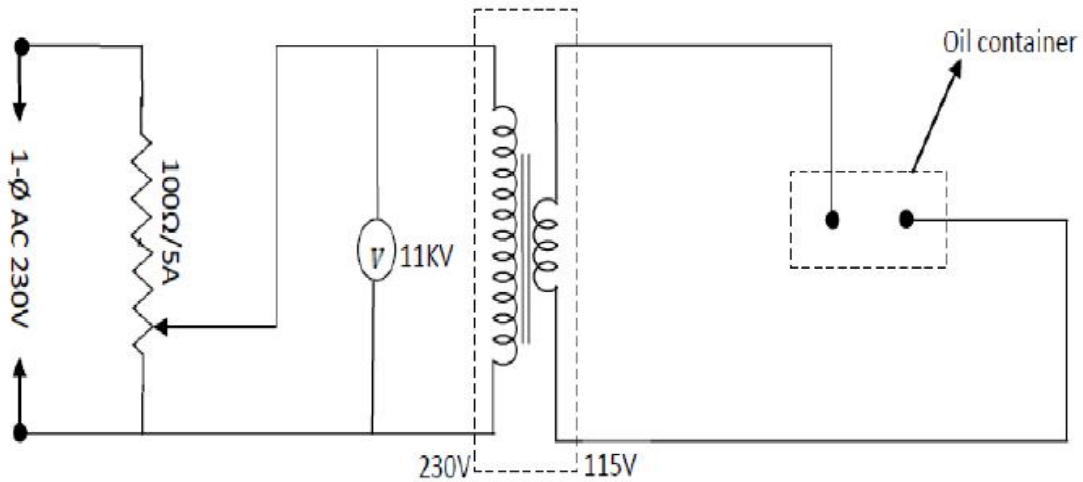


Fig – 5.1 Circuit Diagram of Testing of Transformer Oil

**PROCEDURE:**

- 1) The oil is poured in a container known as test cell the electrodes are polish spheres perfectly of brass arranged horizontally a suitable gauge is used to adjust the gap.
- 2) While pouring the oil sample the test cell(container should )be thoroughly cleaned & the moisture & spended particles should be avoided in fig shown below & experimental setup for finding out the dielectric strength of the give sample of oil.
- 3) The voltmeter is the connected on the primary side of high voltage side transformer for calibration.
- 4) Adjust the gap between the spheres is to 4MM with the help of gauge then pour transformer oil till a depth slurries are immersed.
- 5) Then increase the voltage gradually & continuously till a flashover of the gap is seen on the MCB apparatus note down this voltage. This voltage is known as rapidly applied voltage.
- 6) The breakdown of the gap has taken please mainly due to field effect. The thermal effect is main as the time of application is short.
- 7) Next bring the voltage back Zero & star with 40% of rapidly applied voltage & weight for one min.sec if the flashover by take occurred if not increase the voltage every time by of the rapidly applied voltage and wait for one min till the flash over is seen on the MCB trips. Note the voltage.Repeat the experiment with different values of voltage.
- 8) The acceptable value is 30KV for 4mm & 2.5mm for 11KV the oil should be set for secondly.

**TABULR COLUMN:**

S.NO.	Dielectric strength of oil in kV
1	57.3
2	44.7
3	61.6
4	44.5
5	55.1
6	50.6
7	46.5



$$\text{Average} = \frac{57.3+44.7+66.4+55.1+50.6+46.5}{7} = 51.48\text{kV}$$

### **PRECAUTIONS:**

It is to be noted that the electrodes are immersed vertically in the oil. It is due to the fact that when oil decomposes. Carbon particles being lighter rise up & if electrodes are vertical configurations, this will bridge the gap & the breakdown will take place.

### **RESULT:**

Dielectric strength of transformer oil has been calculated.

## 14. CT TESTING BY COMPARISON METHOD

### AIM:

To obtain the ratio and phase angle errors of the given current transformer (C.T).

### APPARATUS REQUIRED:

S.No	Equipment	Range	Type	Quantity
1	Wattmeters	250V/5A	UPF	2
2	Burden	75Ω	Resistive	1
3	Ammeter	(0-10/20A)	Digital	2
4	Phase shifting Transformer	500VA	Deflecting	1
5	Current Transformers(standard and under Test)	20/5A,10/5A	Instrument	1
6	1φ variac	(0-270V)/20A		1
7	Connecting Wires			As Required

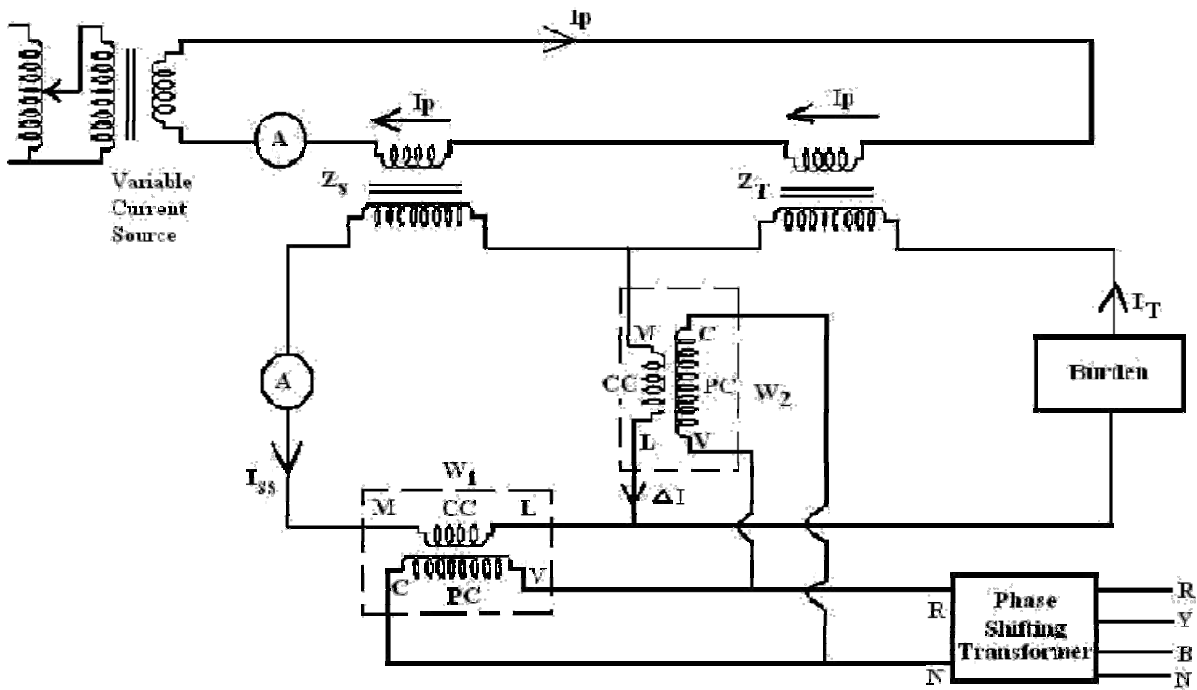
### Theory:

Silsbee's method is a comparison method. There are two types of Silsbee's methods: deflection and null. Only deflection method is described here. Here the ratio and phase angle of the test transformer X are determined, in terms of that of a standard transformer S having the same nominal ratio. The two transformers are connected with their primaries in series. An adjustable burden is put in the secondary circuit of the transformer under test. An ammeter is included in the secondary circuit of the standard transformer so that the current may be sent to the desired value. W1 is a wattmeter whose current coil is connected to carry the secondary current of the standard transformer. The current coil of wattmeter W2 carries current  $\Delta I$  which is the difference between the secondary currents of the standard and test transformer S, X.

The voltage circuits of the wattmeter's (i.e. their pressure coils) are supplied in parallel from a phase shifting transformer at a constant voltage V. This is a comparison type of test employing deflection methods. Here the ratio and phase angle of the test transformer X are determined in terms of that of a standard transformer S having the same nominal ratio. The errors are as follows say

CT	Ratio error	Phase angle error
S	$R_s$	$\theta_s$
T	$R_T$	$\theta_T$

**CIRCUIT DIAGRAM:**



**FORMULAE USED:**

Nominal ratio (NR) of standard C.T = 2 (since 10/5 CT), (4 for 20/5 CT)

The ratio of the C.T. under test  $R_T$  is given by  $R_T = R_s(1 + \frac{W_{2P}}{W_{1P}})$

Actual ratio of standard C.T =  $NR(1 + R_T)$ ;  $2(1 + 0.00882) = 2.0176$

%Error =  $\frac{NR - AR}{AR}$

Phase angle error for the C.T Under test =  $\theta_T = \frac{W_{2P}}{W_{1P}} + \theta_s$  rad.

Phase angle error of standard C.T  $\theta_s = 8$  radians

### PROCEDURE:

- 1) Make the connections as per the circuit diagram.
- 2) Adjust the phase of the primary current(I) of the standard transformer to rated value by using the variac.
- 3) The phase of this current is to be adjusted with the help of phase shifting transformer such that wattmeter W1 reads zero. Voltage V is in quadrature with current  $I_{ss}$  as given in the phasor diagram (Fig 2).
- 4) Note the reading of the wattmeter  $W_2$ . Let this be  $W_{2q}$ .
- 5) The phase of the voltage V is shifted through  $90^\circ$  so that V is phase with  $I_{ss}$ . Note the readings of both Wattmeter's W1 and W2.
- 6) Adjust the phase shifting transformer to zero degrees and at that instant note down the values of both the wattmeters as  $W_{1p}$  and  $W_{2p}$ .
- 7) Bring back the autotransformer to its initial position and switch off the supply.

### TABULAR COLUMN:

S. No	$I_p$	$I_{ss}$	$W_{2q}$	$W_{1p}$	$W_{2p}$	%Ratio Error of test CT	Phase angle Error of test CT	% Ratio Error of standard CT	Phase angle Error of standard CT
1	10	4.95	290	1000	890	0.936	114.98	0.5	$98.4^\circ$

### CALCULATIONS:

Nominal Ratio of standard CT=2(since 10/5A CT,4 for 20/5A CT)

Ratio Error of standard CT  $R_s=0.5\%$

Phase angle Error of standard CT  $\theta_s=8$  radians= $8 \times (180/\pi)=458.4^\circ - 360^\circ = 98.4^\circ$

Phase angle Error of test CT= $\theta_T = (W_{2q}/W_{1p}) + \theta_s = (290/1000) + 8 \times (180/\pi) = 114.98^\circ$

%Error=(NR-AR)/AR $\times 100$

Nominal Ratio (NR)=Primary current/Secondary current=10/5=2

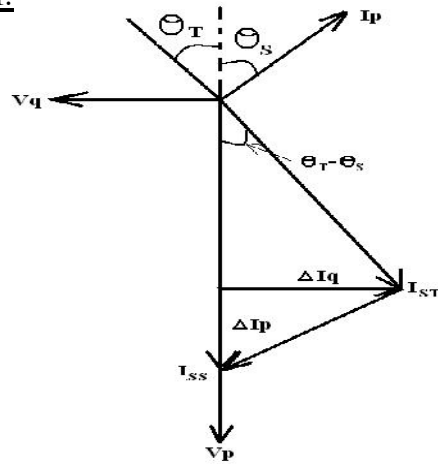
Actual ratio of standard CT=NR $\times (1+R_T)$

$R_T = R_s (1 + W_{2p}/W_{1p})$   
 $= 0.005(1 + 890/1000) = 0.00945$

AR=2 $\times (1 + 0.00945) = 2.0189$

Ratio error of standard CT  $R_s = 0.5\%$

**PHASOR DIAGRAM:**



**RESULT:**

The ratio and phase angle errors of the given current transformer are determined.

## 15. PT –TESTING BY COMPARISION METHOD

### OBJECTIVE:

To obtain the ratio and phase angle errors of the given potential transformer (P.T)

### APPARATUS REQUIRED:

S.No	Equipment	Range	Type	Quantity
1	Wattmeters	250V/5A	UPF	2
2	Voltmeter	0-400V	Digital	2
3	Ammeter	(0-5A)	Digital	1
4	Phase shifting Transformer	500VA	Deflecting	1
5	Potential Transformers(standard and under Test)	400V/100V,200/100 V	Instrument	1
6	1 $\phi$ variac	(0-270V)/20A		1
7	Connecting Wires			As Required

### THEORY:

Method using Wattmeter's this method is analogous to Silsbee's deflection comparison method for potential transformers. The arrangement is shown in Fig 1. The ratio and phase angle errors of a test transformer are determined in terms of those of a standard transformer S having the same nominal ratio. The two transformers are connected with their primaries in parallel. A burden is put in the secondary circuit of test transformer.

W1 is a wattmeter whose potential coil is connected across the secondary of standard transformer. The pressure coil of wattmeter W2 is so connected that a voltage  $\Delta V$  which is the difference between secondary voltages of standard and test transformers, is impressed across it. The current coils of the two watt meters are connected in series and are supplied from a phase shifting transformer. They carry a constant current I.

The errors are as follows

PT	Ratio error	Phase angle error
S	$R_s$	$\theta_s$
T	$R_T$	$\theta_T$

**FORMULAE USED:**

$\%Error = NR - AR / AR \times 100$

Ratio error of standard P.T,  $R_S = 0.92\%$

Nominal ratio of standard P.T = 4 (if  $400V/100V=4, 200V/100V=2$ )

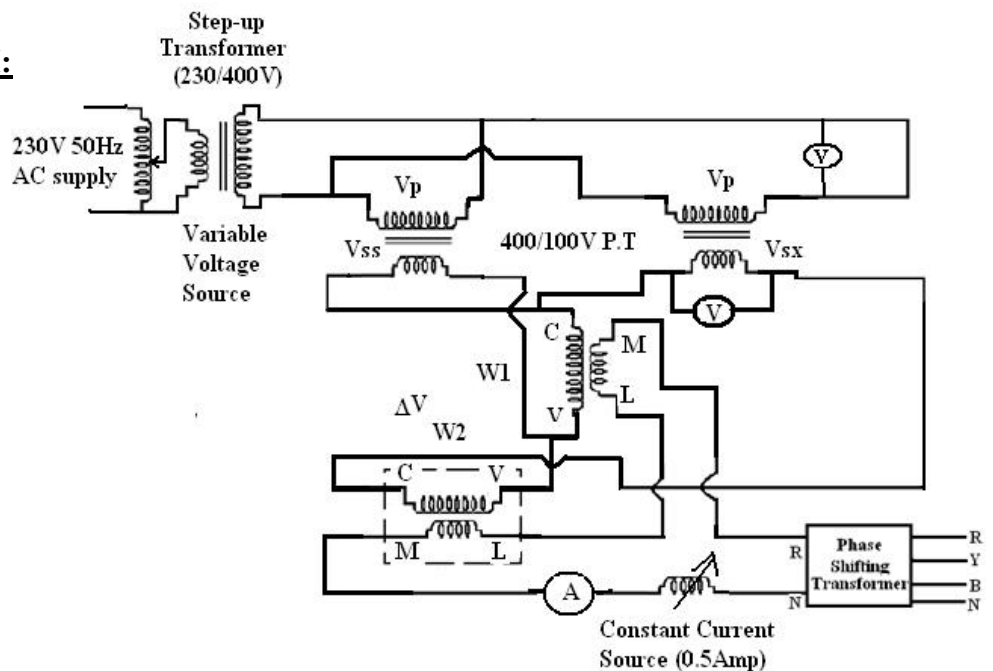
Actual ratio of standard P.T =  $NR(1 + R_T)$  ;  $4(1+0.0295)$

The ratio of the P.T. under test  $R_T$  is given by  $R_T = R_S (1 + W_{2p}/W_{1p})$

Phase angle error for the P.T Under test =  $\Theta_T = (W_{2q}/W_{1p}) + \Theta_S$  rad.

Phase angle error of standard P.T  $\Theta_S = 3$  rad.

**CIRCUIT DIAGRAM:**



## PROCEDURE:

- 1) Make the connections as per the circuit diagram.
- 2) Adjust the phase of the primary voltage(v) of the standard transformer to rated value by using the variac.
- 3) The phase of this voltage is to be adjusted with the help of phase shifting transformer such that wattmeter W1 reads zero. Current I is in quadrature with current  $V_{ss}$  as given in the phasor diagram (Fig 2).  
Note the reading of the wattmeter  $W_2$ . Let this be  $W_{2q}$ .
- 4) The phase of the current I is shifted through  $90^\circ$  so that  $I_p$  is phase with  $V_{ss}$ . Note the readings of both Wattmeter's W1 and W2.
- 5) Adjust the phase shifting transformer to zero degrees and at that instant note down the values of both the wattmeters as  $W_{1p}$  and  $W_{2p}$ .
- 6) Bring back the autotransformer to its initial position and switch off the supply.

## TABLAR COLUMN:

S. No	$V_p(V)$	$V_{ss}(V)$	$W_{2q}$	$W_{1p}$	$W_{2p}$	%Ratio Error of test PT	Phase angle Error of test PT	% Ratio Error of standard PT	Phase angle Error of standard PT
1	391.5	97.9	4	41	99	-0.75%	$177.18^\circ$	0.92%	$171^\circ$ or 3rad

## CALCULATIONS:

$$\text{Phase angle error of the test PT} = \theta_T = (\frac{W_{2q}}{W_{1p}}) + \theta_S = (4/41) + 3 \times (180/\pi) = 177.18^\circ$$

$$\% \text{ Ratio Error} = (\text{NR} - \text{AR}) / \text{AR} \times 100$$

$$\text{Nominal Ratio (NR)} = \text{Primary voltage} / \text{Secondary voltage} = 391.5 / 97.9 = 3.99$$

$$\text{Actual Ratio of the test PT} = \text{NR} \times (1 + R_T);$$

$$= 4 \times (1 + 3.13)$$

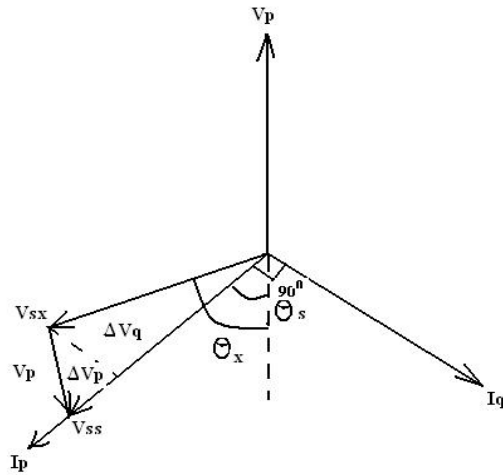
$$= 16.12$$



Where,  $R_T = R_S(1 + W_{2P}/W_{1P})$   
 $R_T = 0.92(1 + 99/41) = 3.13$

% ratio error =  $(4 - 16.12)/16.12 = -0.75\%$

**PHASOR DIAGRAM:**



**RESULT:**

The ratio and phase angle errors of the given potential transformer are determined.